



www.aib-axysafrica.com

Stockbroking | Bond Trading | Corporate Finance | Derivatives



Daily Market Report 23rd July, 2020.

Top Gainers

Company	(%)	Vol.
BKG	7.78%	5,600
NBV	3.45%	5,700
EVRD	2.97%	300
UCHM	2.86%	4,400
FTGH	2.76%	2,600

(Source: NSE, AIB-AXYS)

Top Losers

Company	(%)	Vol.
LKL	-6.33%	16,500
SGL	-4.17%	1,000
IMH	-3.90%	3,200
SMER	-3.90%	100
FAHR	-3.10%	40,600

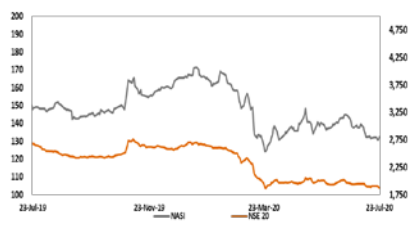
(Source: NSE, AIB-AXYS)

Top Movers

Company	Vol.
SCOM	7,197,400
ABSA	2,638,000
KCB	2,478,600
EQTY	2,077,300
KPLC	497,700

(Source: NSE, AIB-AXYS)

Market Index Movement



(Source: NSE, AIB-AXYS)

Currency

	Today	Previous	% A
USD/KES	108.13	107.88	-0.23%
EUR/KES	125.26	123.41	-1.476%
GBP/KES	137.48	136.95	-0.38%
JPY(100)/KES	100.88	100.55	-0.33%
YUAN/KES	15.45	15.43	-0.08%
RUPEE/KES	1.45	1.45	-0.25%
KES/UGS	34.19	34.25	0.18%
KES/TZS	21.46	21.52	0.32%
RAND/KES	6.57	6.54	-0.49%

(Source: NSE, AIB-AXYS)

Dear client,

Below are today highlights:

CURRENCY:

The shilling appreciated against the greenback to trade at **KES108.13/\$** in contrast to the **KES 107.88 /\$** during the previous session. The shilling has remained under pressure since the mid-March, when the country reported its first case of COVID-19. Foreign investor outflows have increased and CBK has used its forex reserves in a bid to support the shilling. As at July 16th, CBK's usable foreign exchange reserves stood at **USD 9,699 million (5.87 months of import cover)**.

MONEY MARKET:

The interbank rate decreased to 2.29% from **2.33%**.

EQUITIES:

Equity turnover at the NSE decreased by **58.40%** to **KES 0.45Bn** from **KES 1.07Bn** recorded in the previous session. The top traders today were Safaricom, KCB and Equity. The counters' turnover stood at **KES 198Mn**, **KES 85Mn** and **KES66Mn** respectively. Foreign investors were net-sellers recording net outflows of **KES 0.17Bn** as compared to net outflows of **KES 0.54Bn** in the previous session. In terms of company specific foreign activity, foreigners were net-sellers on Safaricom, Equity and KCB.

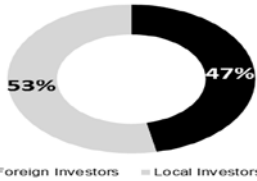
SUMMARY OF MARKET STATISTICS:

KES	Today	Previous	%	Trend	YTD
Equity Turnover	446,912,744	1,074,216,355	(58.40)	↓	47.12
Total Volume Traded	17,002,800	38,780,000	(56.16)	↓	59.34
Market Cap (Bn KES)	2,024.05	2,002.32	1.09	↑	(20.31)
Bond Turnover (Bn KES)	1.44	1.86	(22.84)	↓	2,867.37
NSE 20 Share Index	1,880.84	1,886.45	(0.30)	↓	(29.14)
NSE All Share Index	132.44	131.03	1.08	↑	(20.41)
FTSE NSE KENYA 15 Index	163.54	163.15	0.24	↑	(26.10)
FTSE NSE Kenya 25 Index	175.89	173.75	1.23	↑	(23.36)
FTSE NSE KENYA Gov't bond index	97.32	97.28	0.04	↑	(0.18)
Foreign buys (KES)	124,543,650	470,474,085	(73.53)	↓	(49.33)
Foreign Sales (KES)	293,258,122	1,005,643,290	(70.84)	↓	285.41

(Source: NSE, AIB-AXYS)



Foreign and Local Participation



(Source: NSE, AIB-AXYS)

Top Foreign Buys

Company	Vol.
SCOM	78,758,495
EABL	32,894,200
EQTY	12,544,195
KPLC	192,000
ABSA	69,160

(Source: NSE, AIB-AXYS)

Top Foreign Sales

Company	Vol.
SCOM	154,093,115
KCB	55,742,480
EQTY	31,905,480
EABL	22,243,275
ABSA	17,645,542

(Source: NSE, AIB-AXYS)

Top Traders (Ksh)

Top Traders (Ksh)	
SCOM	198,038,750
KCB	85,028,220
EQTY	66,156,850
EABL	48,926,350
ABSA	23,727,106
SCAN	8,733,965
COOP	4,903,930
NCBA	3,498,580
WTK	1,306,000
SCBK	1,197,500
NMG	1,027,550
KPLC	955,041
CIC	872,345
DTK	271,125
KNRE	269,300

(Source: NSE, AIB-AXYS)

4-Day Key Market Indicators

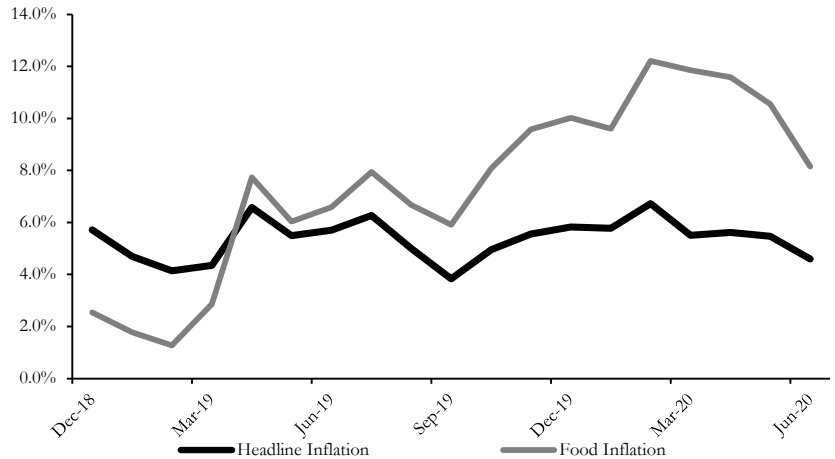
Indicator	23-July-20	22-July-20	21-July-20	20-July-20
NSE 20	1880.84	1886.45	1906.25	1909.63
NASI	132.44	131.03	130.79	132.22
Market Cap (KES Bn)	2024.05	2002.32	1998.69	2020.54
Equity + I Reit turnover (KES Bn)	0.45	1.07	1.01	0.55
Bond Turnover (KES Bn)	1.44	1.86	5.51	0.90

(Source: NSE, AIB-AXYS)

FIXED INCOME MARKET:

Secondary bond market turnover was down, decreasing by **22.84%** to **KES1.44Bn** from **KES1.86Bn** worth of bonds traded previously. The number of deals decreased to **75** from **76** in the previous session. The **IFB1/2020/9Yr** was today's most traded bond.

DAY'S FEATURE: Kenya's year-on-year inflation in June dropped to 4.59 percent.



According to the Kenya National Bureau of Statistics, month on month inflation decreased by **0.31%** from 108.60 in May 2020 to 108.27 in June 2020. During the period under review, the food and non-alcoholic beverages index decreased by **1.27%**, compared to a decrease of **0.24%** in May 2020. Foodstuffs including onions and kale, however, increased by **3.51%** and **4.6%** on the month-on-month inflation and by **23.17%** and **22.54%** on year-on-year change.

Our view: Inflation rates in Kenya are likely to rise with the gradual reopening of the economy. This could also be brought about by the increase in prices of fuel.

The table below shows summary of trading activity at the Nairobi Stock Exchange at the end of day.

Security ID	Net Change	Per Change	Closing Price	Prev Closing Price	Total Turnover	Total Volume	Foreign Buys	Foreign Sales
BKG	1.30	7.78%	18.00	16.70	100.800	5,600	-	100,800
NBV	0.02	3.45%	0.60	0.58	3,416	5,700	-	-
EVRD	0.03	2.97%	1.04	1.01	313	300	-	-
UCHM	0.01	2.86%	0.36	0.35	1,600	4,400	-	-
FTGH	0.04	2.76%	1.49	1.45	3,881	2,600	-	-
SCOM	0.65	2.42%	27.50	26.85	198,038,750	7,197,400	78,758,495	154,093,115
UMME	0.18	2.36%	7.80	7.62	23,400	3,000	-	-
NSE	0.14	2.05%	6.98	6.84	36,982	5,300	-	-
KPLC	0.03	1.59%	1.92	1.89	955,041	497,700	192,000	-
KEGN	0.06	1.02%	5.96	5.90	221,754	37,200	-	-
CIC	0.02	0.84%	2.41	2.39	872,345	361,300	-	-
TPSE	0.10	0.74%	13.55	13.45	200,825	14,800	-	-
BAT	1.00	0.32%	311.00	310.00	124,400	400	-	-
EQTY	0.10	0.31%	31.85	31.75	66,156,850	2,077,300	12,544,195	31,905,480
SCAN	0.05	0.26%	19.65	19.60	8,733,965	444,200	58,800	7,730,285
KCB	0.05	0.15%	34.30	34.25	85,028,220	2,478,600	-	55,742,480
HAFR	-	0.00%	0.45	0.45	13,748	30,500	-	-
EGAD	-	0.00%	10.00	10.00	6,000	600	-	-
ARM	-	0.00%	5.55	5.55	-	-	-	-
BOC	-	0.00%	54.00	54.00	-	-	-	-
CGEN	-	0.00%	22.50	22.50	-	-	-	-
DCON	-	0.00%	0.45	0.45	-	-	-	-
GLD	-	0.00%	1,860.00	1,860.00	-	-	-	-
HFCK	-	0.00%	3.96	3.96	3,168	800	-	-
JUB	-	0.00%	240.00	240.00	-	-	-	-
KAPC	-	0.00%	90.00	90.00	-	-	-	-
KNRE	-	0.00%	2.40	2.40	269,300	112,200	-	-
KQ	-	0.00%	3.83	3.83	-	-	-	-
KUKZ	-	0.00%	360.00	360.00	-	-	-	-
KURV	-	0.00%	1,500.00	1,500.00	-	-	-	-
LBTY	-	0.00%	7.90	7.90	-	-	-	-
LIMT	-	0.00%	385.00	385.00	-	-	-	-
MSC	-	0.00%	0.28	0.28	-	-	-	-
NBK	-	0.00%	4.12	4.12	-	-	-	-
ORCH	-	0.00%	12.25	12.25	-	-	-	-
PORT	-	0.00%	13.85	13.85	-	-	-	-
SBIC	-	0.00%	79.00	79.00	-	-	-	-
SLAM	-	0.00%	14.00	14.00	-	-	-	-
UNGA	-	0.00%	28.00	28.00	-	-	-	-
ABSA	(0.02)	-0.22%	9.00	9.02	23,727,106	2,638,000	69,160	17,645,542
CRWN	(0.15)	-0.32%	46.75	46.90	145,000	3,100	-	-
WTK	(0.50)	-0.34%	145.00	145.50	1,306,000	9,000	-	-
DTK	(0.25)	-0.37%	67.75	68.00	271,125	4,000	26,800	197,200
CTUM	(0.10)	-0.42%	23.90	24.00	265,120	11,100	-	-
OCH	(0.01)	-0.44%	2.24	2.25	895	400	-	-
CARB	(0.04)	-0.45%	8.86	8.90	8,866	1,000	-	-
EABL	(0.75)	-0.47%	160.25	161.00	48,926,350	305,300	32,894,200	22,243,275
XPRS	(0.02)	-0.53%	3.78	3.80	100,880	26,700	-	-
NMG	(0.15)	-1.27%	11.70	11.85	1,027,550	87,900	-	186,155
NCBA	(0.40)	-1.57%	25.15	25.55	3,498,580	139,000	-	-
TOTL	(0.45)	-1.87%	23.65	24.10	37,850	1,600	-	-
SCBK	(3.00)	-1.89%	155.50	158.50	1,197,500	7,700	-	-
BRIT	(0.16)	-2.23%	7.00	7.16	46,882	6,700	-	-
SASN	(0.45)	-2.52%	17.40	17.85	6,960	400	-	-
COOP	(0.30)	-2.55%	11.45	11.75	4,903,930	428,300	-	3,413,790
BAMB	(0.75)	-2.87%	25.35	26.10	78,570	3,100	-	-
TCL	(0.07)	-3.04%	2.23	2.30	61,821	27,700	-	-
CABL	(0.07)	-3.06%	2.22	2.29	1,329	600	-	-
FAHR	(0.18)	-3.10%	5.62	5.80	228,070	40,600	-	-
SMER	(0.15)	-3.90%	3.70	3.85	370	100	-	-
IMH	(1.95)	-3.90%	48.00	49.95	153,600	3,200	-	-
SGL	(1.00)	-4.17%	23.00	24.00	23,000	1,000	-	-
LKL	(0.31)	-6.33%	4.59	4.90	75,670	16,500	-	-



www.aib-axysafrica.com

Stockbroking | Bond Trading | Corporate Finance | Derivatives

AIB-AXYS
AFRICA

CONTACTS:

Research Desk

Sarah Wanga

wangas@aibcapital.com
(+254) 711047105

Linda Kiraithe

lkiraithe@apexafrica.com

Equities Dealing

Bernard Kung'u

kungub@aibcapital.com
(+254) 711047108

Benard Gichuru

gichurub@aibcapital.com
(+254) 711047111

Brian Tanui

tanuib@aibcapital.com
(+254) 711047124

Bond Dealing

Crispus Otieno

otienoc@aibcapital.com
(+254) 711047113

Titus Marenye

marenyet@aibcapital.com
(+254) 7110471180

RESEARCH DISCLOSURE

Though utmost care has been taken in the preparation of this report, we do not guarantee the accuracy or completeness of the information contained herein nor will AIB-AXYS Capital Ltd be held liable for the information contained herein.

The views expressed in this report are solely those of the Research Department and are subject to change without notice.

The information in this report is not an offer for the sale or purchase of any security. This document should only be considered a single factor used by investors in making their investment decisions.

This publication may not be distributed to the public media or quoted or used by the public media without prior and express written consent of AIB-AXYS Capital Ltd.

NOTICE TO US INVESTORS

This report was prepared, approved, published and distributed by AIB-AXYS Capital Limited Company located outside of the United States (a non-US Group Company). This report is distributed in the U.S. by LXM LLP USA, a U.S. registered broker-dealer, on behalf of AIB-AXYS Capital Limited only to major U.S. institutional investors (as defined in Rule 15a-6 under the U.S. Securities Exchange Act of 1934 (the "Exchange Act")) pursuant to the exemption in Rule 15a-6 and any transaction effected by a U.S. customer in the securities described in this report must be effected through LXM LLP USA.

Neither the report nor any analyst who prepared or approved the report is subject to U.S. legal requirements or the Financial Industry Regulatory Authority, Inc. ("FINRA") or other regulatory requirements pertaining to research reports or research analysts. No non-US Group Company is registered as a broker-dealer under the Exchange Act or is a member of the Financial Industry Regulatory Authority, Inc. or any other U.S. self-regulatory organization.

Analyst Certification. Each of the analysts identified in this report certifies, with respect to the companies or securities that the individual analyses, that (1) the views expressed in this report reflect his or her personal views about all of the subject companies and securities and (2) no part of his or her compensation was, is or will be directly or indirectly dependent on the specific recommendations or views expressed in this report. Please bear in mind that (i) AIB-AXYS Capital Limited is the employer of the research analysts responsible for the content of this report and (ii) research analysts preparing this report are resident outside the United States and are not associated persons of any US regulated broker-dealer and that therefore the analysts are not subject to supervision by a US broker-dealer, and are not required to satisfy the regulatory licensing requirements of FINRA or required to otherwise comply with US rules or regulations regarding, among other things, communications with a subject company, public appearances and trading securities held by a research analyst account.

Important US Regulatory Disclosures on Subject Companies. This material was produced by Analysis AIB-AXYS Capital Limited solely for information purposes and for the use of the recipient. It is not to be reproduced under any circumstances and is not to be copied or made available to any person other than the recipient. It is distributed in the United States of America by LXM LLP USA and elsewhere in the world by AIB-AXYS Capital Limited or an authorized affiliate of AIB-AXYS Capital Limited. This document does not constitute an offer of, or an invitation by or on behalf of AIB-AXYS Capital or its affiliates or any other company to any person, to buy or sell any security. The information contained herein has been obtained from published information and other sources, which AIB-AXYS Capital Limited or its Affiliates consider to be reliable. None of AIB-AXYS Capital Limited accepts any liability or responsibility whatsoever for the accuracy or completeness of any such information.

All estimates, expressions of opinion and other subjective judgments contained herein are made as of the date of this document. Emerging securities markets may be subject to risks significantly higher than more established markets. In particular, the political and economic environment, company practices and market prices and volumes may be subject to significant variations. The ability to assess such risks may also be limited due to significantly lower information quantity and quality. By accepting this document, you agree to be bound by all the foregoing provisions.

LXM LLP USA assumes responsibility for the research reports content in regards to research distributed in the U.S. LXM LLP USA or its affiliates has not managed or co-managed a public offering of securities for the subject company in the past 12 months, has not received compensation for investment banking services from the subject company in the past 12 months, does not expect to receive and does not intend to seek compensation for investment banking services from the subject company in the next 3 months. LXM LLP USA has never owned any class of equity securities of the subject company. There are not any other actual, material conflicts of interest of LXM LLP USA at the time of the publication of this research report. As of the publication of this report LXM LLP USA, does not make a market in the subject securities.

Research Tel: 2212206, 0711047000, DL: 0711047105 Mobile: 0736 801 550 Fax: 020 2210500

The Promenade, 5th Floor, General Mathenge Road, P. O. Box 11019 - 00100 Nairobi.

Email: research1@aibcapital.com Website: www.aibcapital.com

Facebook: @aibcapitalld Twitter: @aibcapital